

# OPERATING INSTRUCTIONS

## Parts List



## ***CBG Hand Pallet Truck***

**Note:** Owner and operator MUST read and understand this operating instructions before use this pallet truck.

Thank you for choosing our pallet truck. For your safety and correct operation, please carefully read the manual before use.

**NOTE:** All of the information reported herein is based on data available at the time of printing. The factory reserves the right to modify its own products at any time without notice or incurring in any sanction. Please verify with the factory for possible updates.

## 1. GENERAL SPECIFICATIONS

| Type                         | Type I                                      |      | Type II |      |
|------------------------------|---|------|---------|------|
| Max. Fork Height (mm)        | 200(or190)                                  |      |         |      |
| Min. Fork Height (mm)        | 85(or75)                                    |      |         |      |
| Fork Length (mm)             | 1150  | 1220 | 1150    | 1220 |
| Width Overall Forks (mm)     | 520   | 685  | 550     | 685  |
| Individual Fork Width (mm)   | 150   |      | 160     |      |
| Load Wheel Diameter (mm)     | Ø 80x70(or Ø 74x70) Nylon, Polyurethane     |      |         |      |
| Steering Wheel Diameter (mm) | Ø 200(or Ø 180) Nylon, Polyurethane, Rubber |      |         |      |

Special fork length are available 800, 900, 950, 1000, 1500, 2000mm.

Materials and specification are subject to change without notice.

## 2. TO ATTACH HANDLE TO PUMP UNIT

2.1 Remove 3 bolts (111) from the handle bracket (215).

2.2 Set handle (110A, 110B and 110AS) on the bracket (215), notice to allow the chain (114) and the adjusting bolts (116) assembly to pass through the hole in the center of the bracket (215) and shaft (220).

2.3 Insert the 3 bolts (111) through the handle into the bracket (215), then tighten them securely.

2.4 Raise the lever plat (221) and insert the adjusting bolt (116) into the front slot, keeping the adjusting nut (117) on the under side of the lever plat (221).

## 3. TO ADJUST RELEASE DEVICE

On the draw-bar of this pallet truck, you can find the control handle(108 and 108S) which can be regulated in three positions :

Raise - handle down

Drive position - handle in center position

Lower - handle up, the lever moves back the drive position when released.

If however they have been changed, you can adjust according to following step:

3.1 If the forks elevate while pumping in the **DRIVE** position, turn the adjusting nut (117) on the adjusting bolt(116) or adjusting screw(223) clockwise until pumping action does not raise the forks and the **DRIVE** position functions properly.

3.2 If the forks descend while pumping in the **DRIVE** position, turn the nut(117) or adjusting screw(223) counter-clockwise until the forks do not lower.

3.3 If the forks do not descent when the control handle (108 and 108S) is in the **LOWER** position,

turn the nut(117) or adjusting screw(223) clockwise until raising the control handle(108 and 108S) lowers the forks. Then check the **DRIVE** position according to item 3.1 and 3.2 to be sure the nut (117) or adjusting screw(223) is in the proper position.

3.4 If the forks do not elevate while pumping in the **RAISE** position, turn the nut (117) or adjusting screw(223) counter-clockwise until the forks elevate while pumping in the **RAISE** position. Then check the **LOWER** and **DRIVE** position according to item 3.1, 3.2 and 3.3.

## 4. MAINTENANCE

Your pallet truck is largely maintenance-free.

### 4.1 OIL

Please check the oil level every six months. The oil capacity is about 0.3lt. Restore the fluid level in the rubber reservoir to 5mm below the top, this must be with the forks in the lowered position.

Use the hydraulic type oil according to temperature scale below.

| Temperature | Oil                  |
|-------------|----------------------|
| -20 ~+40    | L-HV46 Hydraulic oil |

### 4.2 TO BANISH THE AIR

The air may come into the hydraulic oil because of transportation or pump in upset position. It can cause that the forks do not elevate while pumping in the **RAISE** position. The air can be banished in the following way: let the control handle (108 and 108S) on the **LOWER** position, then move the handle (110A, 110B and 110AS) up and down for several times.

### 4.3 DAILY CHECK AND MAINTENANCE

Daily check of the pallet truck can limit wear as much as possible. Special attention should be paid to the wheels, the axles, as thread, rags, etc. It may block the wheels. The forks should be unloaded and lowered in the lowest position when the job is over.

### 4.4 LUBRICATION

All bearings and shafts are provided with long-life grease at the factory. You only need provide with long-life grease at monthly intervals or after each time the truck is cleaned thoroughly to the lubrication points.

## 5. GUIDE TO SAFETY OPERATION

5.1 Operator should read all warning signs and instructions here and on the pallet truck before using this truck.

5.2 To pull the truck, always move the control handle into the drive position. This makes the draw-bar easier to move and depressurizes the pump section of the hydraulics. This preserves the hydraulic seals and the valve components. A long service life can be expected.

5.3 Do not operate a pallet truck unless you are familiar with it and have been trained or authorized to do so.

5.4 Do not operate a pallet truck unless you have checked its condition. Give special attention to the wheels and rollers, the draw-bar unit, the fork unit, the lever plat, etc. .

5.5 Do not use on a slopping ground.

5.6 Do not take up any people on the pallet truck.

5.7 The operator had better take on gloves for labor protecting.

5.8 When the goods have been transported, all people should be away from the forks for 600mm.

5.9 Do not load goods like fig. 2/B .

5.10 Do not load over maximum capacity.

5.11 At others special condition or place, the operator should be carefully to operate the pallet truck.

## 6. TROUBLES SHOOTING

| No | Trouble   | Clause  | Fixing Methods  |
|----|---|---|---|
| 1  | The forks can not be up the max. height.            | - The hydraulic oil is not enough.  | - Pour in the oil.  |
| 2  | The forks can not be lifted up.                     | - Without hydraulic oil.<br>- The oil has impurities.<br>- The nut (117) is too high or the screw (223) is too close, keep the pumping valve open.<br>- Air come into the hydraulic oil.  | - Fill in the oil.<br>- Change the oil.<br>- Adjust the nut (117) or the screw (223) .(see item 3.4)<br>- Banish the air.(see item 4.2)   |
| 3  | The forks can not be descended.                     | - The piston rod(259) or pump body is deformed resulting from partial loading slanting to one side or over-loading.<br>- The fork was kept in the high position for long time with piston rod bared to arise in rusting and jamming of the rod.<br>- The adjusting nut (117) or the screw (223) is not in the correct position. | - Replace the piston rod (259) or pump body.<br><br>- Keeping the fork in the lowest position if not using, and pay more attention to lubricate the rod.<br><br>- Adjust the nut (117) or the screw (223). (see item 3.3) |
| 4  | Leaks   | - Sealing parts worn or damaged.<br>- Some part cracked or worn into small.   | - Replace with the new one.<br>- Replace with the new one.  |
| 5  | The fork descends without the release valve worked. | - The impurities in the oil cause the release valve to be unable to close tight.<br>- Some parts of hydraulic system is cracked or bored.<br>- Air come into the oil.<br>- Sealing parts worn or damaged.<br>- The adjusting nut (117) or the screw (223) is not in the correct position.                                       | - Replace with new oil.<br><br>- Inspect and replace the waste parts.<br>- Banish the air. (See item 4.2)<br>- Replace with the new one.<br><br>- Adjusting the nut (117) or the screw (223). (See item 3.2)              |

**NOTE: DO NOT ATTEMP TO REPAIR THE PALLET TRUCK UNLESS YOU ARE TRAINED AND AUTHORIZED TO DO SO.**

Fig.1

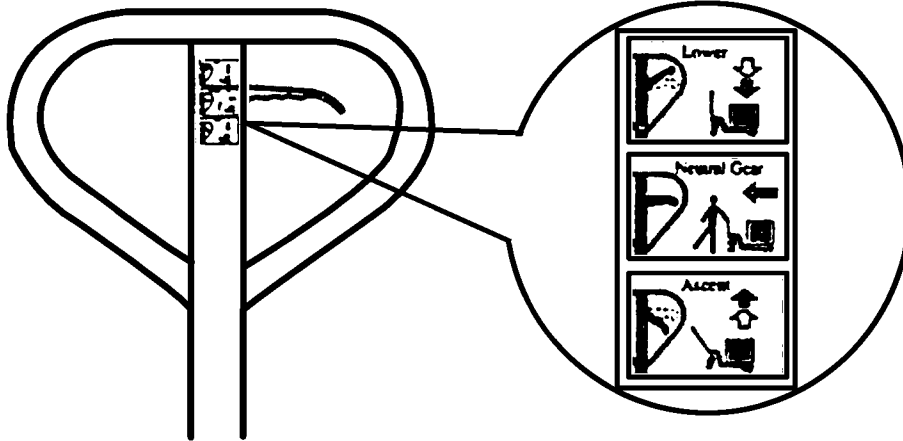
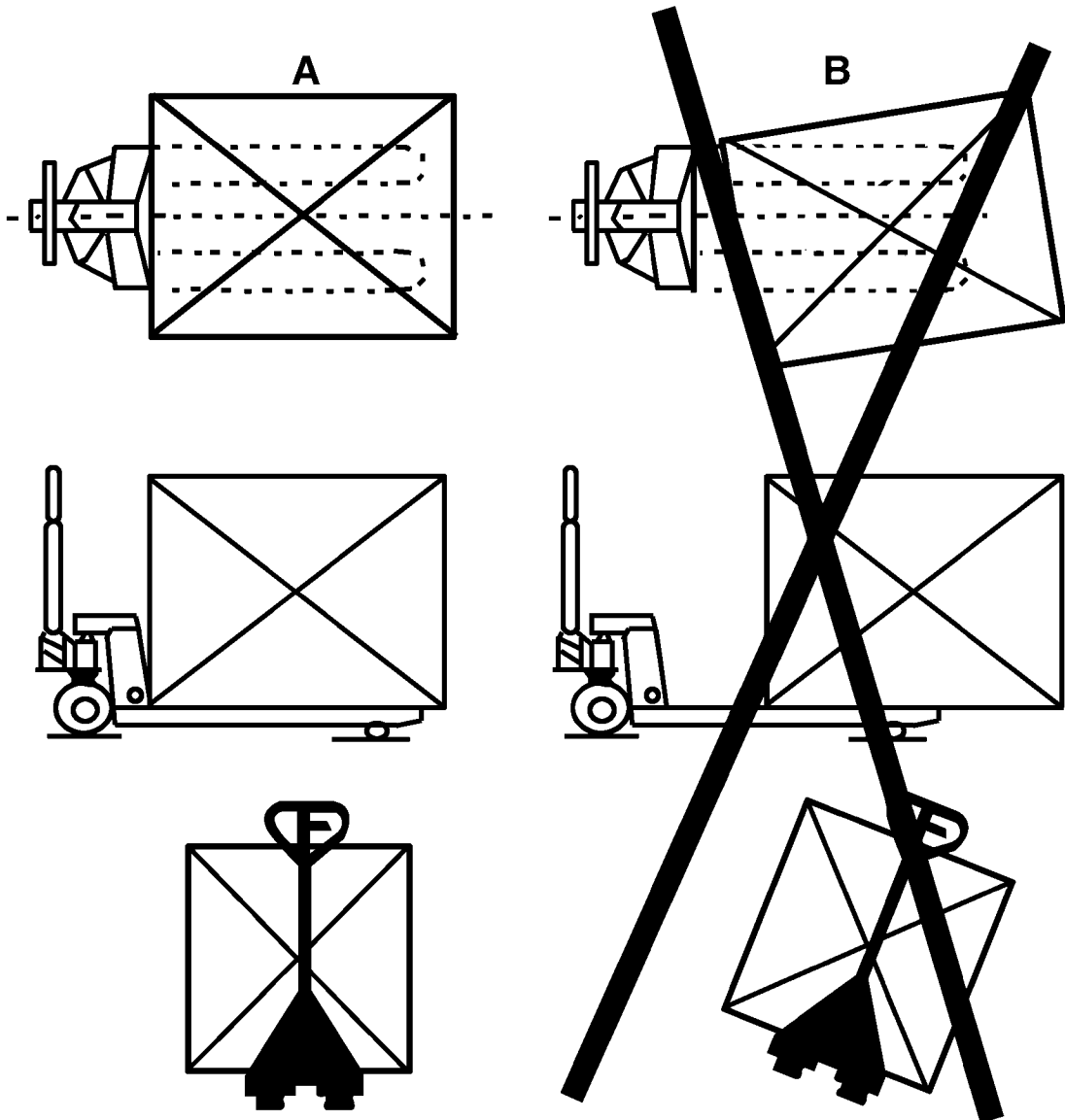
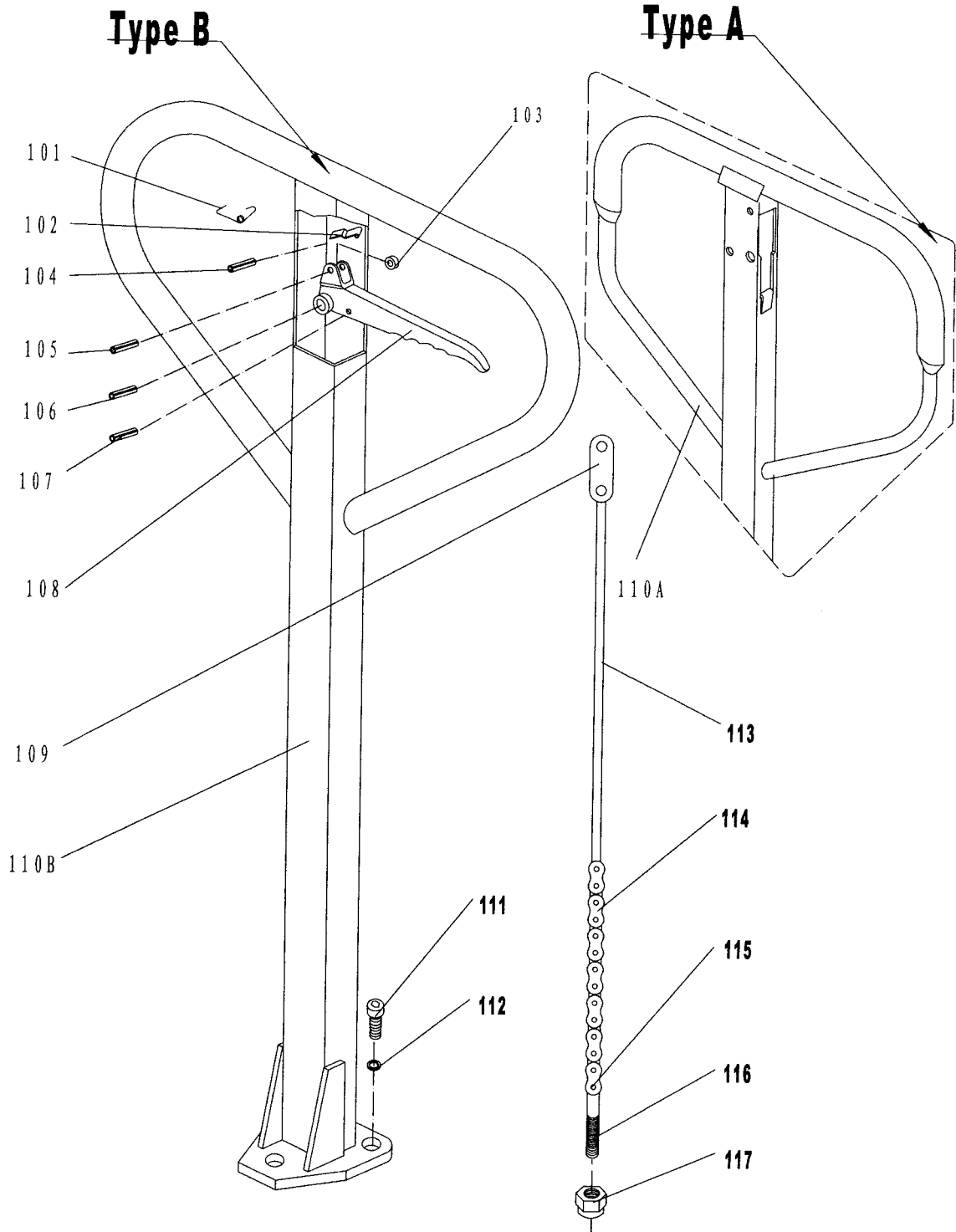


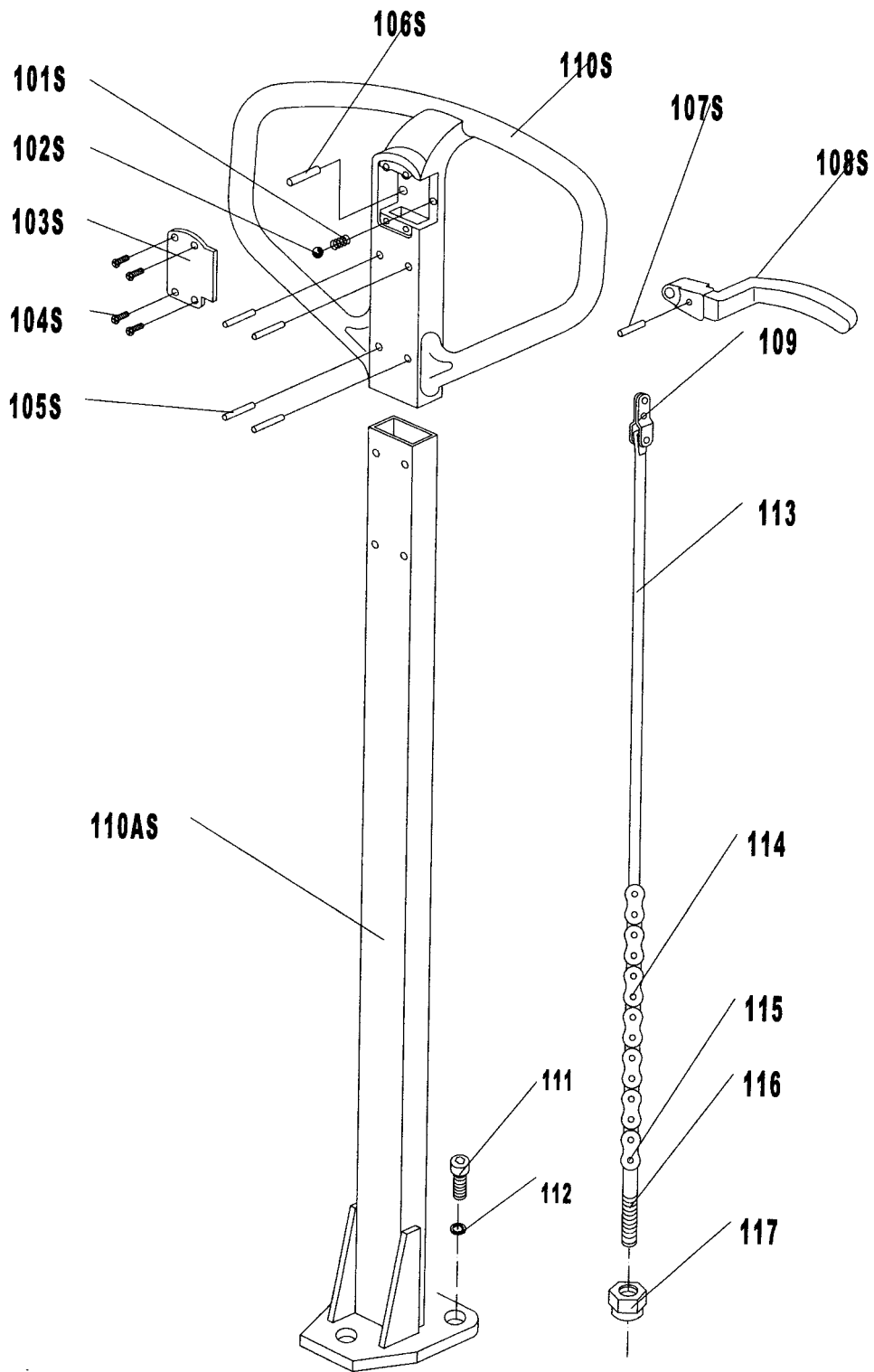
Fig.2



# TYPE A and B Handle



# TYPE D Handle



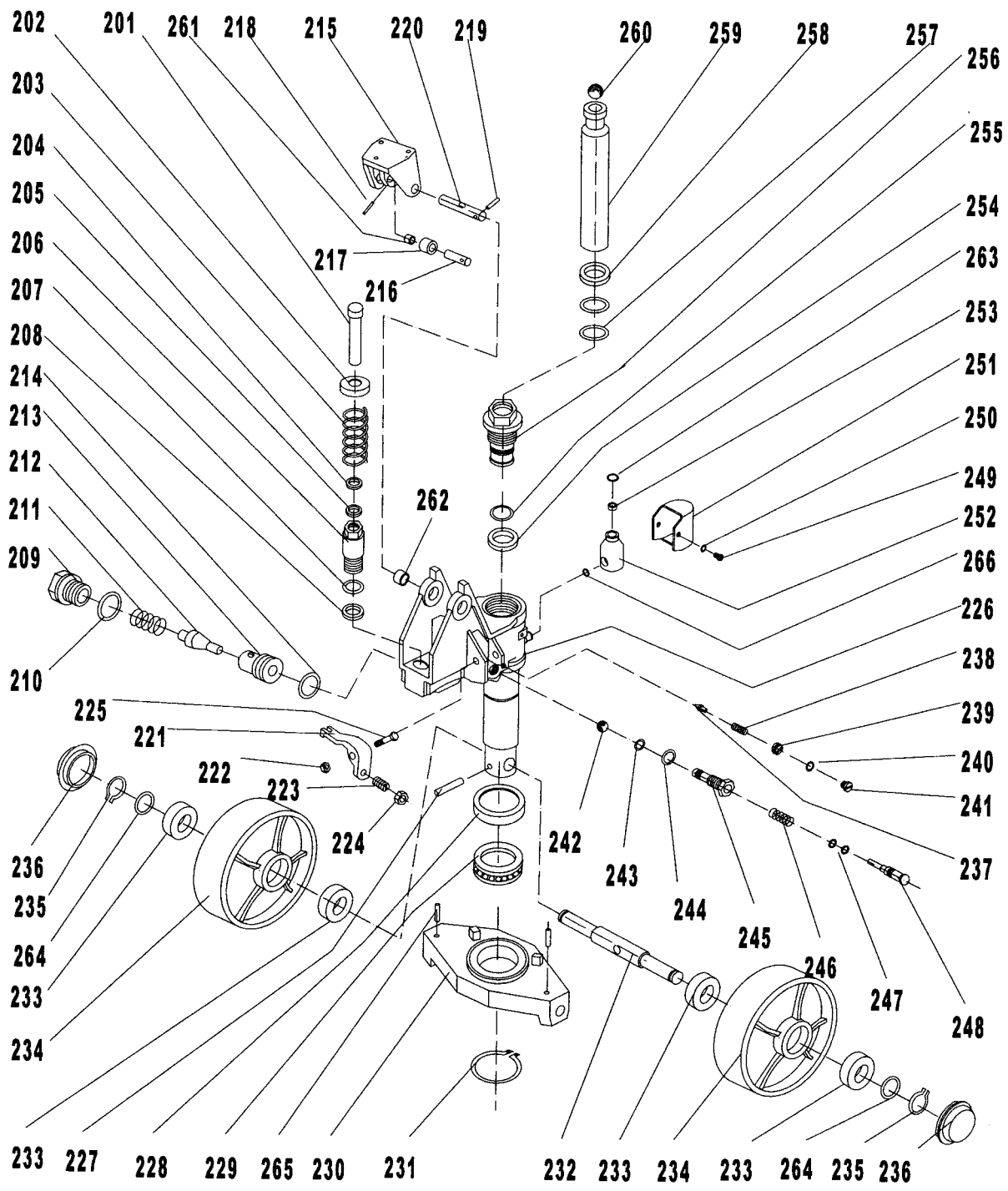
### Part List for TYPE A and B HANDLE

| No.  | Description    | Qty. | Remark     |
|------|----------------|------|------------|
| 101  | Spring         | 1    |            |
| 102  | Blade Spring   | 1    |            |
| 103  | Roller         | 1    |            |
| 104  | Elastic Pin    | 1    |            |
| 105  | Elastic Pin    | 1    |            |
| 106  | Elastic Pin    | 1    |            |
| 107  | Elastic Pin    | 1    |            |
| 108  | Control Handle | 1    |            |
| 109  | Pull Board     | 1    |            |
| 110A | Handle         | 1    | For Type A |
| 110B | Handle         | 1    | For Type B |
| 111  | Screw          | 3    |            |
| 112  | Washer         | 3    |            |
| 113  | Pull Rod       | 1    |            |
| 114  | Chain          | 1    |            |
| 115  | Pin            | 1    |            |
| 116  | Adjusting Bolt | 1    |            |
| 117  | Adjusting Nut  | 1    |            |

### Part List for TYPE D

| No.   | Description    | Qty | Remark          |
|-------|----------------|-----|-----------------|
| 101S  | Spring         | 1   | Only for Type D |
| 102S  | Steel Ball     | 1   |                 |
| 103S  | Cover          | 1   |                 |
| 104S  | Screw          | 4   |                 |
| 105S  | Pin            | 4   |                 |
| 106S  | Pin            | 1   |                 |
| 107S  | Elastic Pin    | 1   |                 |
| 108S  | Control Handle | 1   |                 |
| 109   | Pull Board     | 1   |                 |
| 110S  | Handle         | 1   | Only for Type D |
| 110AS | Draw - bar     | 1   |                 |
| 111   | Bolt           | 3   |                 |
| 112   | Elastic Washer | 3   |                 |
| 113   | Pull Rod       | 1   |                 |
| 114   | Chain          | 1   |                 |
| 115   | Pin            | 1   |                 |
| 116   | Adjusting Bolt | 1   |                 |
| 117   | Adjusting Nut  | 1   |                 |

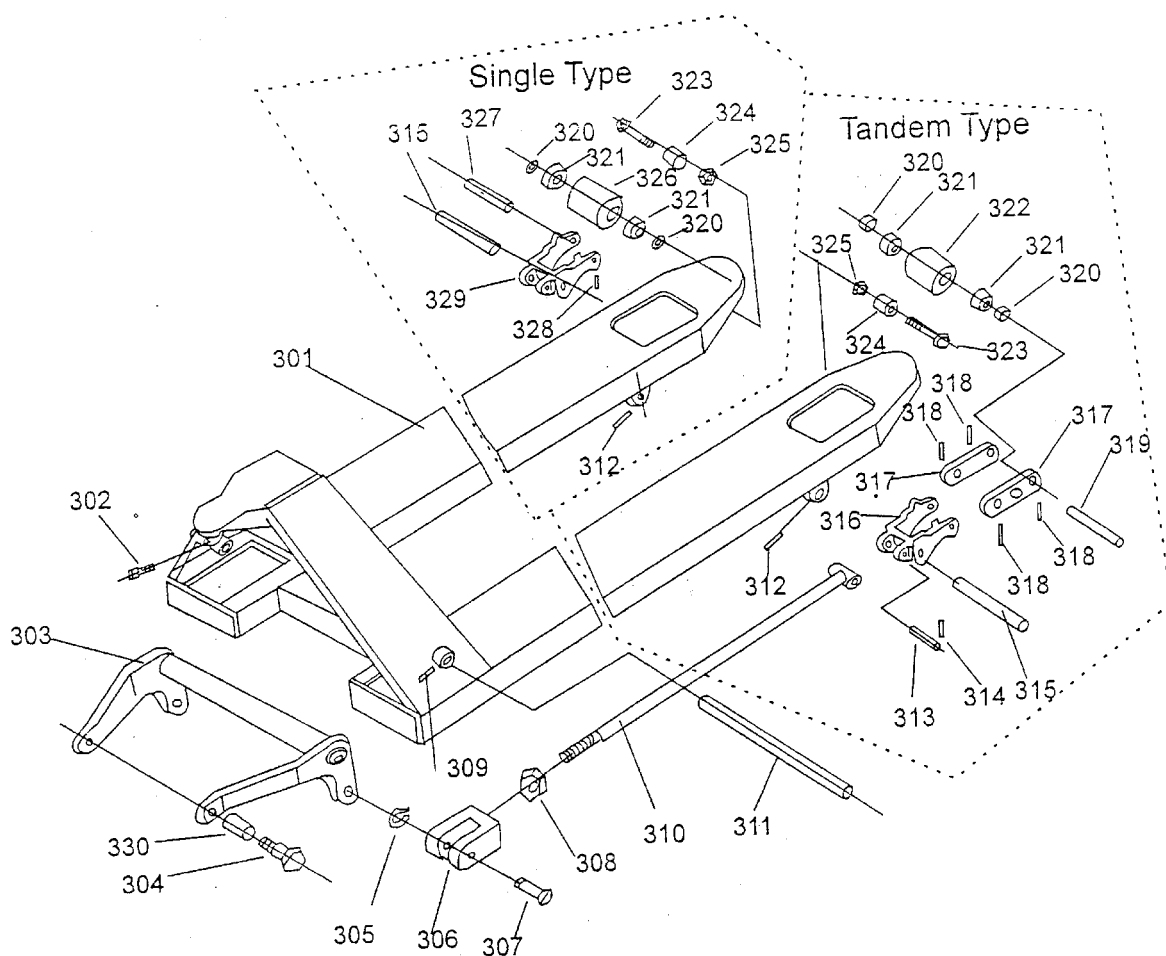




## PART LIST OF PUMP

| No. | Description              | Qty. | No. | Description             | Qty. |
|-----|--------------------------|------|-----|-------------------------|------|
| 201 | Pump Piston              | 1    | 235 | Retaining Ring          | 2    |
| 202 | Cap of Piston            | 1    | 236 | Dust cover              | 2    |
| 203 | Spring                   | 1    | 237 | Spindle of Safety valve | 1    |
| 204 | Dust Ring                | 1    | 238 | Spring                  | 1    |
| 205 | Seal                     | 1    | 239 | Adjusting Bolt          | 1    |
| 206 | Little Cylinder          | 1    | 240 | Seal Washer             | 1    |
| 207 | O – ring                 | 1    | 241 | Screw                   | 1    |
| 208 | Seal Washer              | 1    | 242 | Steel Ball              | 1    |
| 209 | Screw                    | 1    | 243 | O – Ring                | 1    |
| 210 | O – Ring                 | 1    | 244 | Seal Washer             | 1    |
| 211 | Spring                   | 1    | 245 | Sleeve                  | 1    |
| 212 | Spindle of Pumping Valve | 1    | 246 | Spring                  | 1    |
| 213 | Seat of Valve            | 1    | 247 | O – Ring                | 2    |
| 214 | O – Ring                 | 1    | 248 | Strike Pin              | 1    |
| 215 | Bracket                  | 1    | 249 | Bolt                    | 2    |
| 216 | Shaft                    | 1    | 250 | Washer                  | 2    |
| 217 | Pressure Roller          | 1    | 251 | Cover                   | 1    |
| 218 | Elastic Pin              | 1    | 252 | Oil Tank                | 1    |
| 219 | Elastic Pin              | 1    | 253 | Plug                    | 1    |
| 220 | Shaft                    | 1    | 254 | Seal                    | 1    |
| 221 | Lever Plate              | 1    | 255 | O – Ring                | 1    |
| 222 | Nut                      | 1    | 256 | Sleeve                  | 1    |
| 223 | Nut                      | 1    | 257 | O – Ring                | 2    |
| 224 | Adjusting Screw          | 1    | 258 | Dust Ring               | 1    |
| 225 | Bolt                     | 1    | 259 | Piston Rod              | 1    |
| 226 | Body of Pump             | 1    | 260 | Steel Ball              | 1    |
| 227 | Elastic Pin              | 1    | 261 | Bushing                 | 1    |
| 228 | Bearing Cover            | 1    | 262 | Bushing                 | 2    |
| 229 | Bearing                  | 1    | 263 | O – Ring                | 1    |
| 230 | Thrust Plate             | 1    | 264 | Washer                  | 2    |
| 231 | Retaining Ring           | 1    | 265 | Elastic Pin             | 2    |
| 232 | Shaft of Steering wheel  | 1    | 266 | O – Ring                | 1    |
| 233 | Bearing                  | 4    | 267 |                         |      |
| 234 | Steering wheel           | 2    | 268 |                         |      |

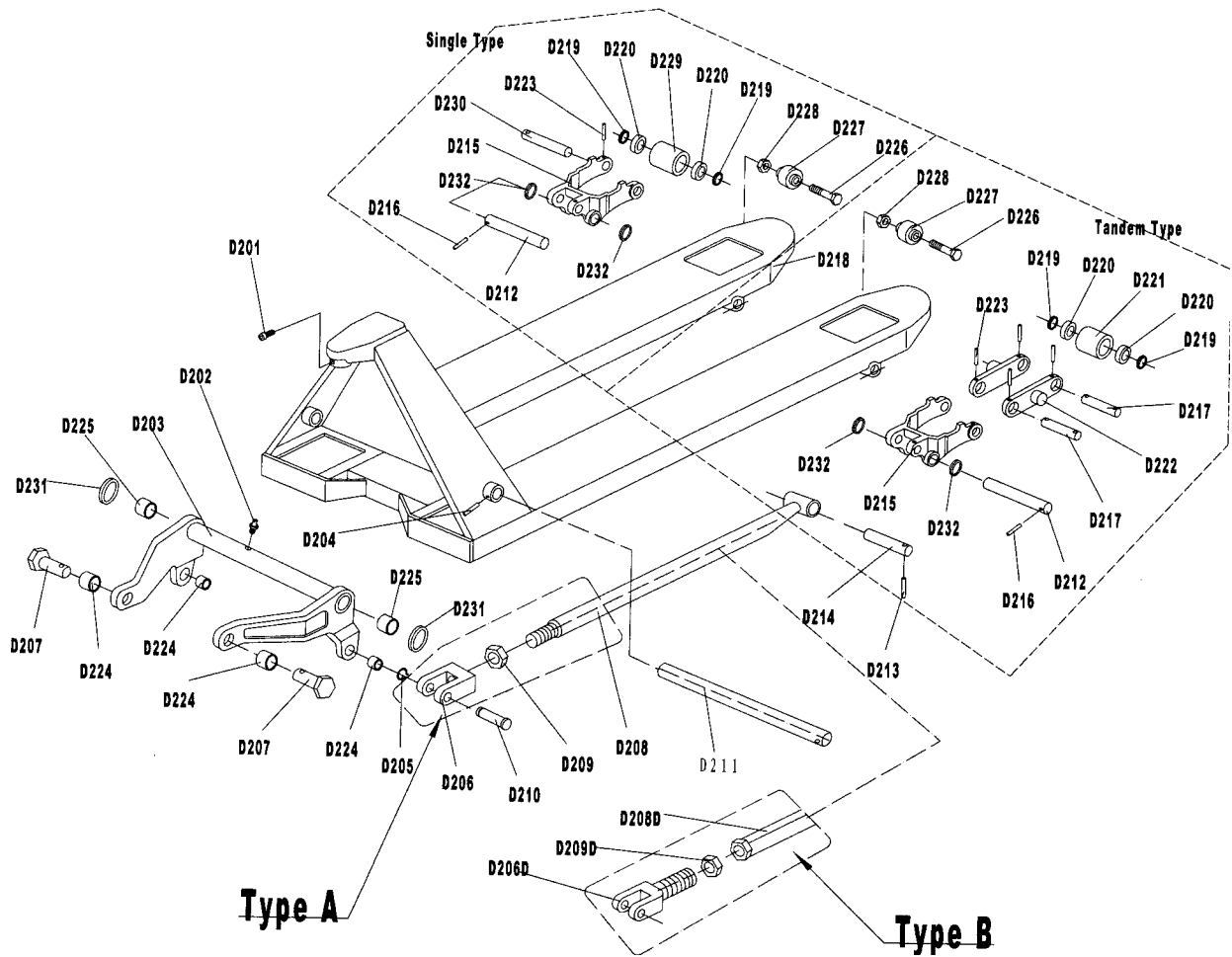
## Type I



| No.  | Description     | Qty. | No.  | Description      | Qty.   |
|------|-----------------|------|------|------------------|--------|
| 301  | Fork Frame      | 1    | 317# | Linking Plate    | 4      |
| 302  | Bolt            | 1    | 318  | Elastic Pin      | 8 od 2 |
| 303  | Rock - Arm      | 1    | 319# | Shaft for Roller | 4      |
| 304  | Shaft           | 1    | 320  | Washer           | 8 od 4 |
| 305  | Retaining Ring  | 2    | 321  | Bearing          | 8 od 4 |
| 306  | Joint           | 2    | 322# | Loading Roller   | 4      |
| 307  | Shaft           | 2    | 323  | Bolt             | 2      |
| 308  | Nut             | 2    | 324  | Enter Roller     | 2      |
| 309  | Elastic Pin     | 1    | 325  | Nut              | 2      |
| 310  | Pushing Rod     | 2    | 326* | Loading Roller   | 2      |
| 311  | Shaft           | 1    | 327* | Shaft for Roller | 2      |
| 312  | Elastic Pin     | 2    | 328* | Elastic Pin      | 2      |
| 313  | Shaft           | 2    | 329* | Frame of Roller  | 2      |
| 314  | Elastic Pin     | 2    | 330  | Bushing          | 2      |
| 315  | Shaft           | 2    |      |                  |        |
| 316# | Frame of Roller | 2    |      |                  |        |

**(NOTE: #-for double wheel, \*-for single wheel)**

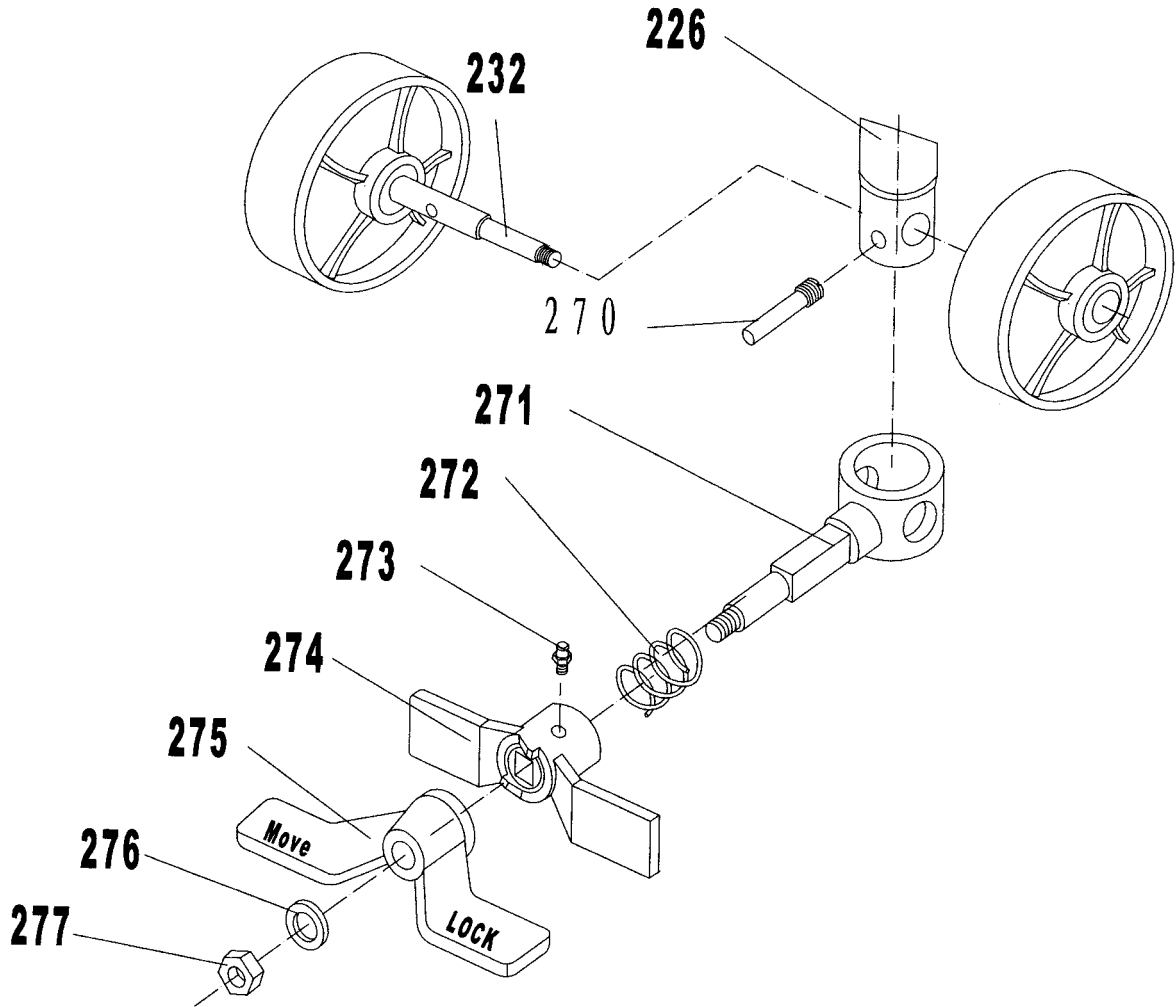
## TYPE II



| No.   | Description     | Qty. | Remark                 | No.   | Description      | Qty.   | Remark |
|-------|-----------------|------|------------------------|-------|------------------|--------|--------|
| D201  | Screw           | 1    |                        | D216  | Elastic Pin      | 2      |        |
| D202  | Oil - holder    | 1    |                        | D217# | Shaft for Roller | 4      |        |
| D203  | Rock – arm      | 1    |                        | D218  | Fork Frame       | 1      |        |
| D204  | Elastic Pin     | 1    |                        | D219  | Washer           | 8 or 4 |        |
| D205  | Retaining Ring  | 2    |                        | D220  | Bearing          | 8 or 4 |        |
| D207  | Shaft           | 2    | <b>ONLY for Type A</b> | D221# | Loading Roller   | 4      |        |
| D206  | Joint           | 2    |                        | D222# | Linking Plate    | 4      |        |
| D208  | Pushing Rod     | 2    |                        | D223  | Elastic Pin      | 8 or 2 |        |
| D209  | Nut             | 2    | <b>ONLY for Type B</b> | D224  | Bushing          | 4      |        |
| D206D | Joint           | 2    |                        | D225  | Bushing          | 2      |        |
| D208D | Pushing Rod     | 2    |                        | D226  | Bolt             | 2      |        |
| D209D | Nut             | 2    |                        | D227  | Enter Roller     | 2      |        |
| D210  | Pin             | 2    |                        | D228  | Nut              | 2      |        |
| D211  | Shaft           | 1    |                        | D229* | Loading Roller   | 2      |        |
| D212  | Shaft           | 2    |                        | D230* | Shaft for Roller | 2      |        |
| D213  | Elastic Pin     | 2    |                        | D231  | Washer           | 2      |        |
| D214  | Shaft           | 2    |                        | D232  | Washer           | 4      |        |
| D215  | Frame of Roller | 2    |                        |       |                  |        |        |

(Note # --For Tandem wheel, \* --For single wheel)

## Foot Brake



| NO. | Description    | Qty. | NO. | Description | Qty. |
|-----|----------------|------|-----|-------------|------|
| 226 | Pump Body      | 1    | 274 | Brake Plate | 1    |
| 232 | Shaft of wheel | 1    | 275 | Pedal       | 1    |
| 270 | Pin            | 1    | 276 | Washer      | 1    |
| 271 | Holding Sleeve | 1    | 277 | Nut         | 1    |
| 272 | Spring         | 1    |     |             |      |
| 273 | Oil - Holder   | 1    |     |             |      |

**NOTE:** *The foot brake is a additional part, it may not be fixed to your pallet truck, if you need it, you should extra order it.*